

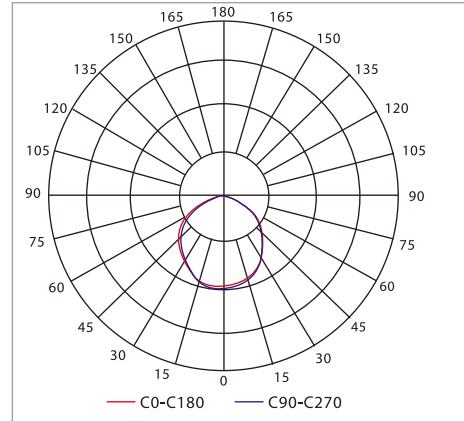
HIGH BAY LIGHT



TLT-HB41-43A



PHOTOMETRIC

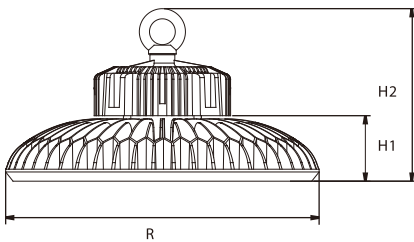


PRODUCT PARAMETERS

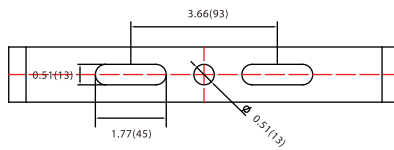
MODEL	VOLTAGE (V)	WATT(W)	4000K EFFICACY (LM/W)	4000K LUMENS (LM)	BEAM ANGLE (H-V)	REPLACE	DIMMING	ETL& CETL	DLC	CRI	POWER FACTOR	AVAILABLE CCT(K)
TLT-HB41A-100	120-277V	94.04	124.01	11662	120°-120°	250-400W HID	Available	✓	✓	>75	>0.92	4000 5000
TLT-HB42A-150	120-277V	153.1	128.43	19663.2	120°-120°	320-600W HID	Available	✓	✓			
TLT-HB42A-150	347-480V	150	128	19200	120°-120°	320-600W HID	Available	✓				
TLT-HB43A-200	120-277V	209.6	127.29	26680	120°-120°	400-750W HID	Available	✓	✓			
TLT-HB43A-200	347-480V	200	127	25400	120°-120°	400-750W HID	Available	✓				
TLT-HB43A-230	120-277V	233.9	124.36	29085.2	120°-120°	600-1000W HID	Available	✓	✓			

For the 5000K products, the EFFICACY and LUMENS will be about 3-5% higher

DIMENSION Inch(mm)



Wattage	R	H1	H2
100W	11.0(280)	2.7(69)	7.3(185)
150/200W	13.4(340)	2.8(71)	7.4(187)
240W	15.7(400)	3.0(76)	7.8(197)



Bracket Installation

INSTALLATION



PACKAGE INFORMATION

MODEL	INNER BOX (MM)	MASTER CARTON (MM)	QTY/CTN	NET WEIGHT(KG)	GROSS WEIGHT(KG)	CUBIC METER
TLT-HB41A-100	N/A	340*340*210	1	3.4	4.4	0.025
TLT-HB42A-150	N/A	400*400*210	1	5.1	6.1	0.034
TLT-HB43A-200	N/A	450*450*220	1	7	8.3	0.045
TLT-HB43A-230	N/A	450*450*220	1	7.1	8.4	0.045

ACCESSORIES



Dimmable Motion Sensor
120-277V



Hood for 100W(90°)and 150W(60°)